

## I-205/Portland Mall Light Rail Project

Have you heard? A new MAX line will connect southeast Portland and Clackamas County to the Portland Transit Mall.



Final design of the I-205/Portland Mall Light Rail Project is under way, and construction will begin in early 2007. When the dust settles in September 2009, MAX will extend 6.5 miles farther south along I-205 to Clackamas Town Center, and the Portland Mall will be renovated with MAX service running north and south.

### On the Portland Mall

The new line will include tracks on the Portland Mall along 5th and 6th avenues between Union Station and Portland State University. MAX stations on the Mall will be located every four to five blocks. Bus stops will be on the same side of the street but on alternating blocks.

The project will bring other improvements to the Mall, including:

- A continuous auto lane along its entire length
- Auto pullouts for business deliveries and customer access
- Traffic-flow improvements to the Burnside intersections at 5th and 6th avenues
- Sidewalks and other facilities restored to "like new" condition

*Continued on page 4*

**TriMet**  
4012 SE 17th Avenue  
Portland OR 97202

PRSR STD  
US Postage  
PAID  
Portland, OR  
Permit No. 587

# Drive less. Save more. campaign debuts

“DriveLess. SaveMore” is a new campaign to help Oregonians and residents of Southwest Washington save money, time and stress when dealing with today’s congested highways and roads. Its goal is to increase awareness about transportation choices such as biking and walking, and to encourage simple, convenient actions such as combining several errands in one trip.

The two-year pilot program will take place mostly in the greater Portland metro area (watch for some amusing TV ads), with a state-wide effort to follow.

Contributors are Metro, ODOT, TriMet, and Washington County, with partnership and support from Columbia River Mental Health Services and Wilsonville SMART.

For more information visit [drivelessavemore.com](http://drivelessavemore.com), call Metro’s Regional Travel Options Program at 503-813-7566 or send e-mail to [trans@metro-region.org](mailto:trans@metro-region.org). The hearing impaired may call TDD 503-797-1804.

## March service update

### Minor bus schedule adjustments effective March 5

Starting Sunday, March 5, schedules will be adjusted on the following bus lines:

- 6-Martin Luther King Jr Blvd
- 9-Powell
- 48-Cornell
- 71-60th Ave/122nd Ave
- 76-Beaverton/Tualatin
- 78-Beaverton/Lake Oswego
- 88-Hart/198th Ave

To see how your trips are affected, preview the new schedules at [trimet.org](http://trimet.org) or call us at 503-238-RIDE. New printed schedules will be available in late February.

### Lines 10 & 75 detoured at NE 33rd Avenue & Lombard

Beginning in mid-March, bus lines 10-NE 33rd Ave and 75-39th Ave/Lombard will be detoured due to construction on 33rd Avenue at the Lombard overpass. The overpass will be closed through October 2006 as crews replace the main span. For more information, visit [trimet.org](http://trimet.org).

## Transportation management associations: here to help

Transportation management associations (TMAs) are groups organized to help employees use commute alternatives. Generally they receive support from local employers. TriMet recommends all Transportation Coordinators get involved with their local TMAs as a way to learn about commute alternatives in their area and discover new ways to promote them.

TMA name/locale	Web site	Phone
Clackamas Regional Center	<a href="http://crc-tma.com">crc-tma.com</a>	Wilda Parks 503-654-7777
Gresham Regional Center	<a href="http://gresham.org/transit.htm">gresham.org/transit.htm</a>	Kathy Everett 503-665-3827
Lloyd District	<a href="http://ldtma.com">ldtma.com</a>	Rick Williams 503-236-6441
Swan Island	<a href="http://swanislandtma.org">swanislandtma.org</a>	Lenny Anderson 503-745-6563
Troutdale	NA	Allyson Thompson 503-669-7473
Westside Transportation Alliance	<a href="http://wta-tma.org">wta-tma.org</a>	Karen Frost 503-617-4844

# TriMet tests biodiesel

TriMet is testing biodiesel in 75 LIFT fleet buses that provide door-to-door service for the elderly and people with disabilities. TriMet is the first transit district in

Oregon and one of a handful of transit districts nationally to use biodiesel in its bus fleet.

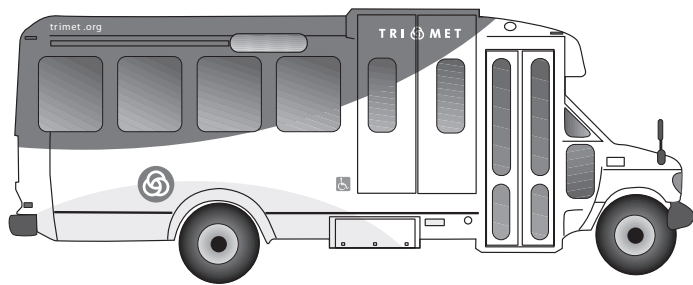
The biodiesel blend being tested is B5, which is five percent vegetable

oil and used cooking oil and 95 percent petroleum diesel. It is manufactured at SeSequential Biofuels in Salem, using cooking oil from the region's restaurants and Kettle Foods in Salem.

Biodiesel use benefits everyone by:

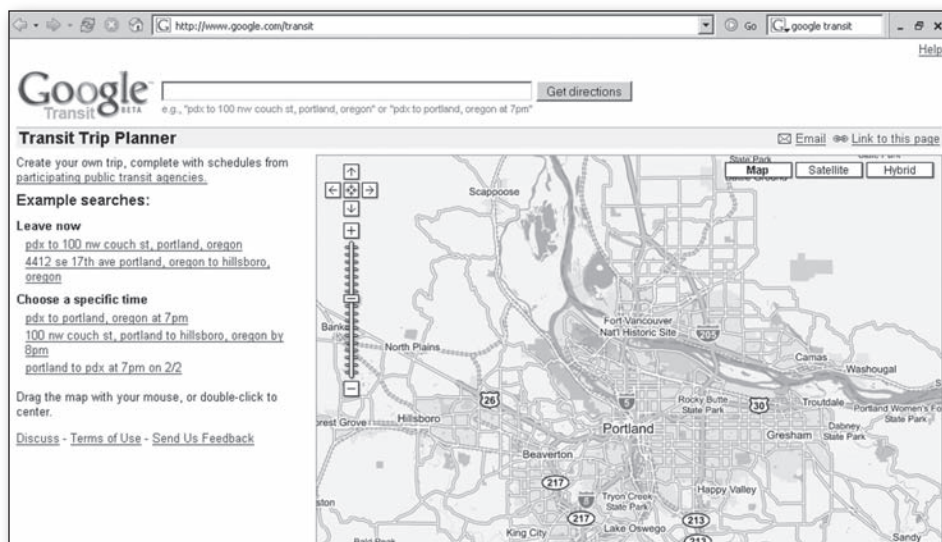
- Reducing reliance on foreign oil
- Reducing air pollution and emissions
- Enhancing the regional economy

If all goes well, the entire LIFT fleet of 210 buses will use B5 biodiesel within a year. TriMet will also evaluate the potential of using biodiesel in the agency's 611 fixed-route buses.



## Google selects TriMet to test new transit trip planner

Google, the popular web search site, has partnered with TriMet to provide transit trip-planning information. Combining TriMet schedule data with Google's popular map interface, Google Transit allows users to plan a transit trip in the Portland area and instantly see the origin, destination, route and transfers on a map. You can try it for free and provide feedback at [google.com/transit](http://google.com/transit)



## TC Spotlight

### Kimberly Morrill of Standard Insurance Company



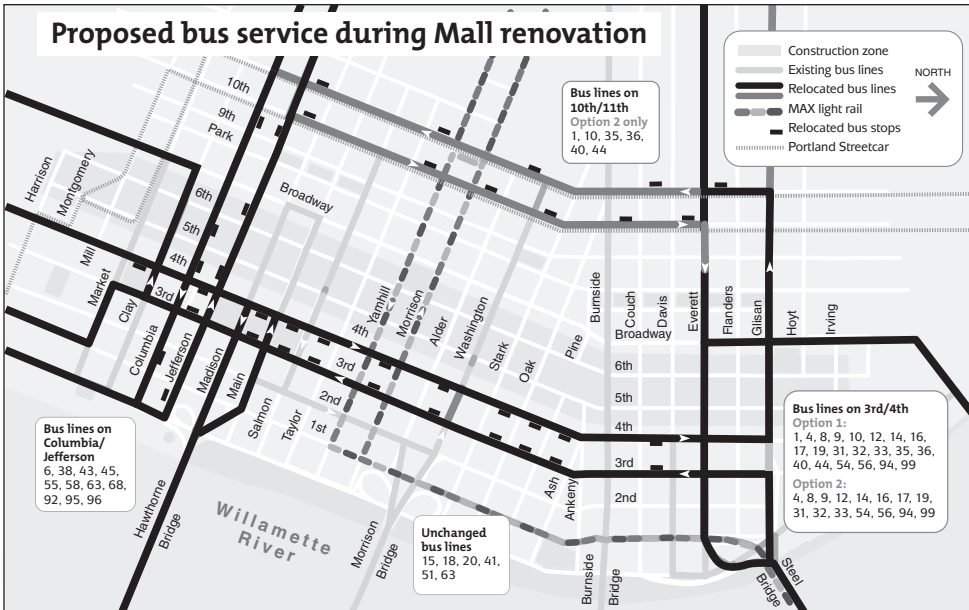
Kimberly Morrill

Standard Insurance Company has more than 2,000 Oregon employees, and most of them work at

offices on or near the Portland Transit Mall. Kimberly Morrill helps them make the most of their transportation options.

As transportation coordinator, Kimberly educates new employees about The Standard's transportation program. Under the program, employees can apply a \$28.50 monthly subsidy to a TriMet annual Snap Pass, a C-TRAN Annual Pass or a carpool—and they have access to bicycle lockers and showers. Kim also manages the company's internal website, which has information about all modes of transportation.

“The best part about my job is helping my fellow employees,” said Kim, and her results speak for themselves. More than 1,200—over half the employees in Oregon—ride TriMet, and many others choose C-TRAN, carpools or cycling and walking. Way to go, Kim!



## Relocating bus service during construction

During construction on the Mall—from January 2007 through spring 2009—all bus traffic will be temporarily moved off 5th and 6th avenues.

Under the plan's **Option 1**, 21 lines would move to 3rd and 4th avenues. Eight bus lines would move to Columbia and Jefferson streets to improve east-west bus service downtown. Some may remain there when the Mall reopens in 2009.

**Option 2** is similar except that some bus lines would move to 10th and 11th avenues. This would provide more connections to Portland Streetcar by using its stops and shelters, and would decrease the number of buses on 3rd and 4th avenues.

For details, view the complete bus relocation plan at [trimet.org](http://trimet.org).

## Along I-205

The new MAX line will include eight new stations in the southeast, from Gateway Transit Center to the Clackamas Town Center Transit Center. This will bring MAX connections to or near Adventist Medical Center, four new Park & Ride lots, five east-west bus lines and Clackamas Town Center, including its Transit Center connections.

## Get involved

Want to learn more or share your thoughts on bus-service relocation options? Weigh in at one of these upcoming Transit Investment Plan (TIP) open houses:

**Wednesday, March 15**  
11 a.m.-2 p.m. & 4-7 p.m.

Portland Building, Room C  
1120 SW 5th Ave.  
Portland, OR 97204

**Tuesday, March 21**  
4-7 p.m.

Portland Adventist Academy  
1500 SE 96th Ave.  
Portland, OR 97216

**Wednesday, March 22**  
4-7 p.m.

Beaverton Community Center  
12350 SW 5th St.  
Beaverton, OR 97005

Can't attend in person?  
Check out a "virtual" open house at [trimet.org](http://trimet.org) starting March 15. **Feedback on bus relocation options must be received by March 31.**

## Contact TriMet

Customer assistance and trip planning .....	503-238-RIDE TTY 503-238-5811 <a href="http://trimet.org">trimet.org</a>
Employer programs .....	503-962-7670
Carpool/vanpool programs .....	503-962-2433
Carpool matching .....	<a href="http://carpoolmatchnw.org">carpoolmatchnw.org</a> 503-CAR-POOL
Info for people with disabilities .....	503-962-2455
Bikes on TriMet .....	503-962-7644

*To Work* is published quarterly by the TriMet Marketing Department.  
For more information about employer transportation programs, contact TriMet Marketing:

503-962-7670 • [employerprograms@trimet.org](mailto:employerprograms@trimet.org) • FAX 503-962-6469