

# Portland-Milwaukie Light Rail Project

---

## Citizens Advisory Committee February 19, 2009



**PORTLAND-MILWAUKIE**  
LIGHT RAIL PROJECT

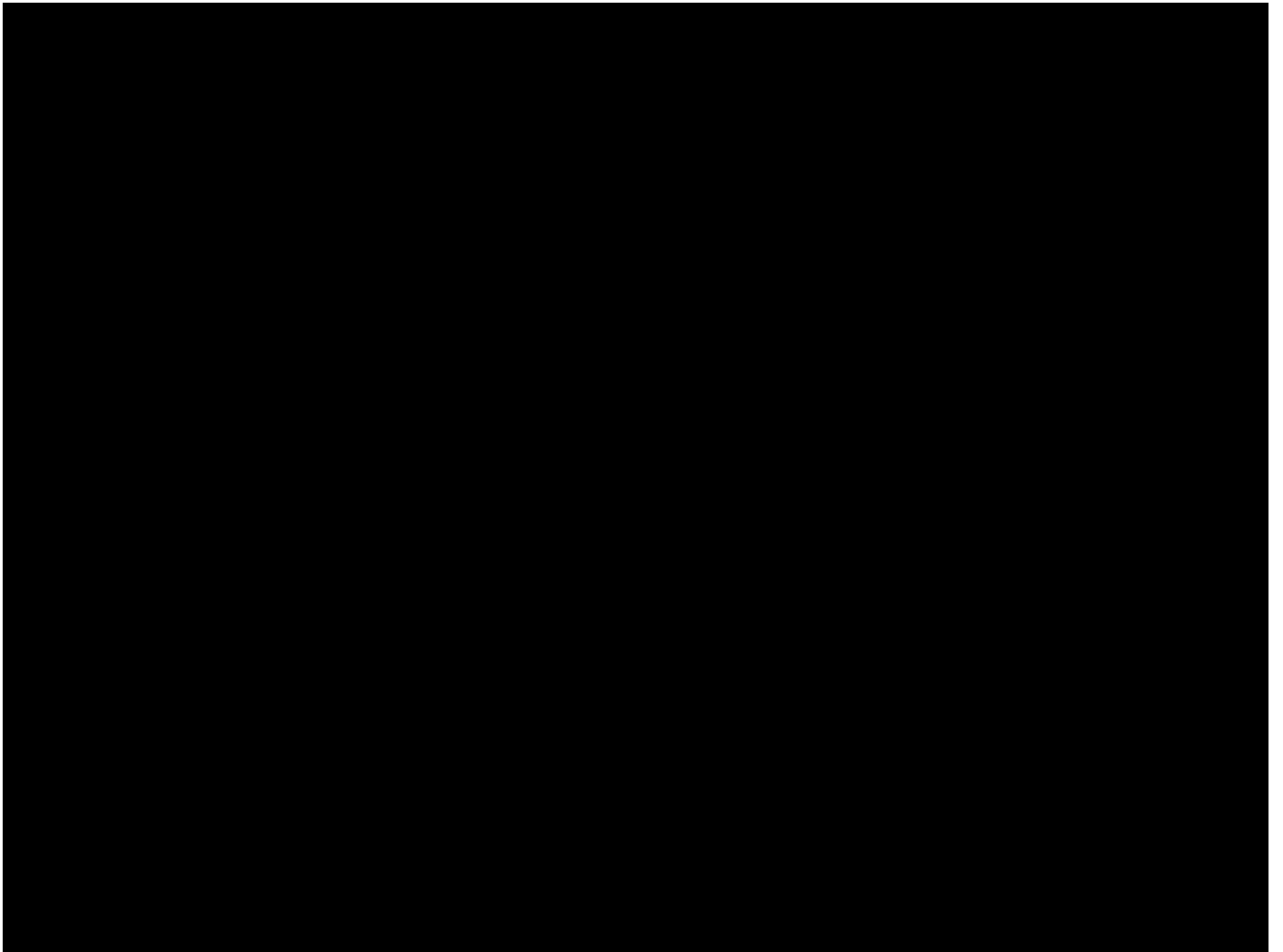


## CAC Vice Chair

---

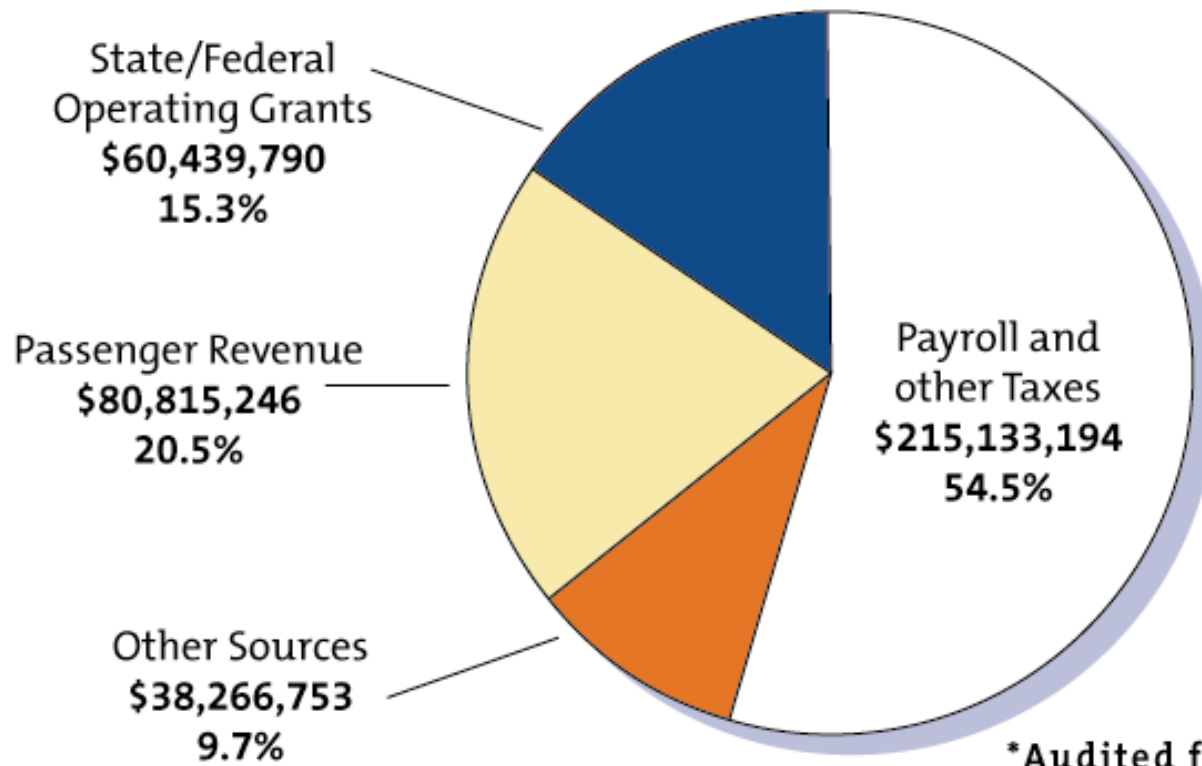
**Send feedback to:**

Rick Williams: [rick.williams@bpmdev.com](mailto:rick.williams@bpmdev.com)



## TriMet Update

### Operating Revenue Sources (FY08)\*



\*Audited financial data

## TriMet Update

---

### **Recent service cut announcements**

- Must cut \$13.5 million from budget
- On top of \$4 million in cuts from December
- Proposal to eliminate 12 bus lines & reduce some MAX and bus service
  - Low-performing bus lines
  - Lower ridership MAX and bus trips
  - Alternate service nearby

## TriMet Update

---

### **Fareless Square (4 options to consider)**

1. No changes
2. Limit to rail only
3. Adjust boundaries in Lloyd District
4. Institute \$1 fare bus and MAX in Fareless

## TriMet Update

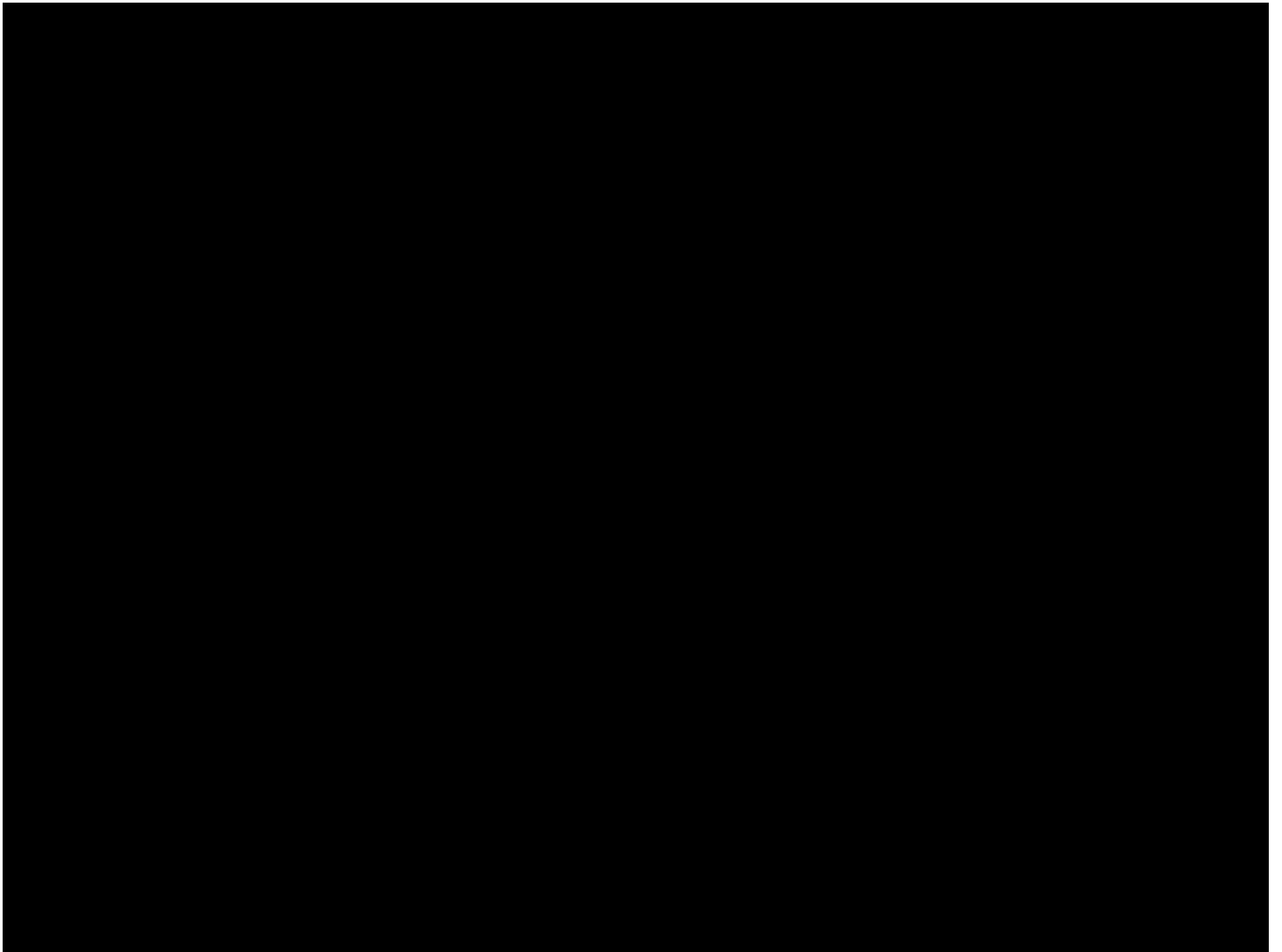
---

### **3-Month Public Process**

- Four Open Houses
- Three hearings
- Email: [comments@trimet.org](mailto:comments@trimet.org)
- 503-238-RIDE (7433)

### **Federal stimulus package**

- \$49 million in federal stimulus dollars
- Infrastructure and capital projects only
- Contracts within 120 days/job creation
- Details @ *trimet.org*



## Project Issue List

---

### **Project Issues**

- Issues identified by local jurisdiction and community
- Public input needed
- Timely decision-making to maintain schedule, budget
- Not a complete list of all issues
- Tool to help project make timely decisions
- Updated to show approximate timeline

## Project Issue List

---

### Projected Time Frame to Address Issue

Issue Description

Potential cost

### Early Preliminary Engineering

Lincoln Harbor station location	\$
Willamette Bridge vertical clearance	\$ - \$\$\$
SE 17th Ave station locations	(\$\$)
Elevated or at-grade McLoughlin crossing	(\$\$)
Park Ave Park and Ride configuration	(\$)
Willamette River bridge type	\$\$\$

## Project Issue List

---

### Projected Time Frame to Address Issue

Issue Description

Potential cost

### Middle of Preliminary Engineering (Target - prior to July 2009)

Multi use (bike/ped) paths throughout alignment	\$\$
SW Moody Street elevation	(\$\$\$)
Project wide stormwater approach and treatment	\$
Supplemental safety measure SE 8-12th Ave. (noise)	\$\$
SE Powell overpass assumptions	\$\$\$
Alternative bike route to SE 17th	(\$)
SE 17th Ave streetscape and track treatment	\$\$
Environmental mitigation (type and locations)	
Streetcar scope in project (east and west)	\$\$

## Project Issue List

---

### Projected Time Frame to Address Issue

Issue Description

Potential cost

### Late Preliminary Engineering (Target - prior to November 2009)

Oversized freight route - SE Water

Urban design elements in public ROW

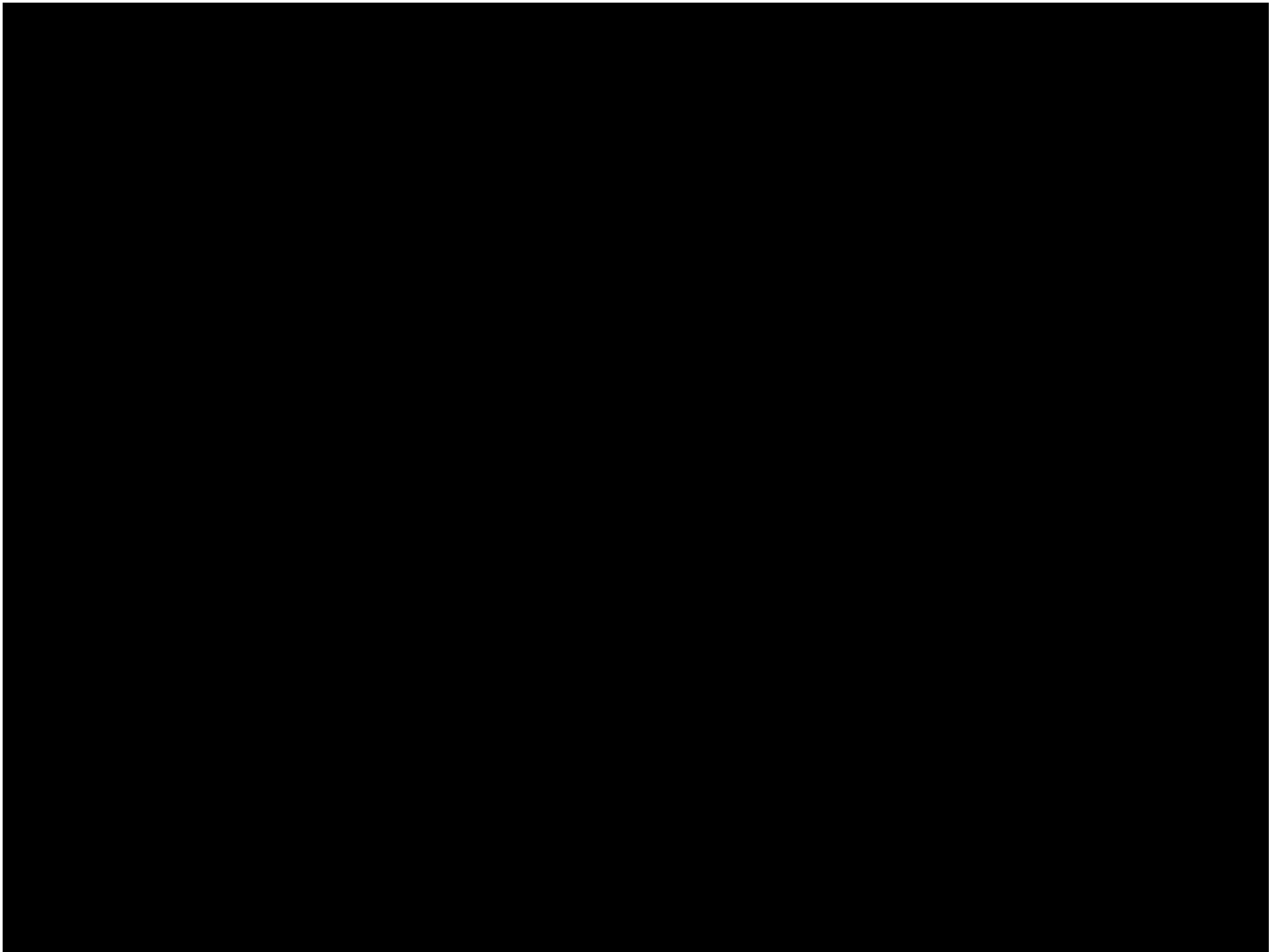
Lake Road station urban design treatments

\$

Milwaukie bus circulation

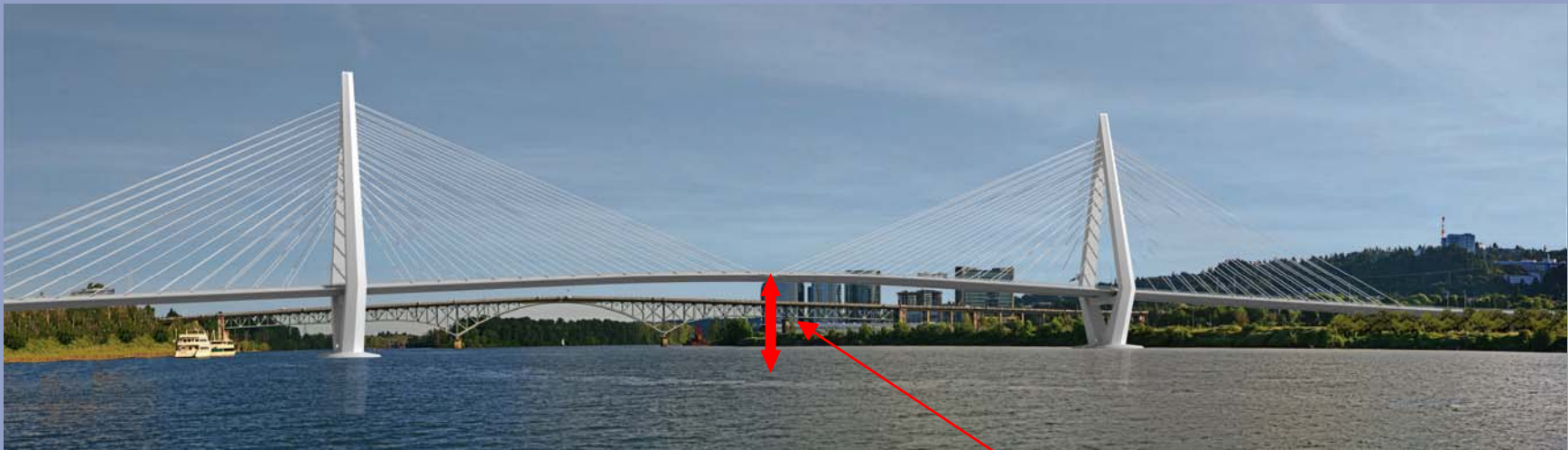
Tacoma Park and Ride size and traffic mitigation

Design treatment for Kellogg Creek bridge



# West Segment- Willamette River Bridge

## Vertical Clearance for Navigation



?

## West Segment- Willamette River Bridge

### Vertical Clearance for Navigation

#### **Question:**

What is the minimum clearance that the bridge should provide? 75' has been assumed to date.

## West Segment- Willamette River Bridge

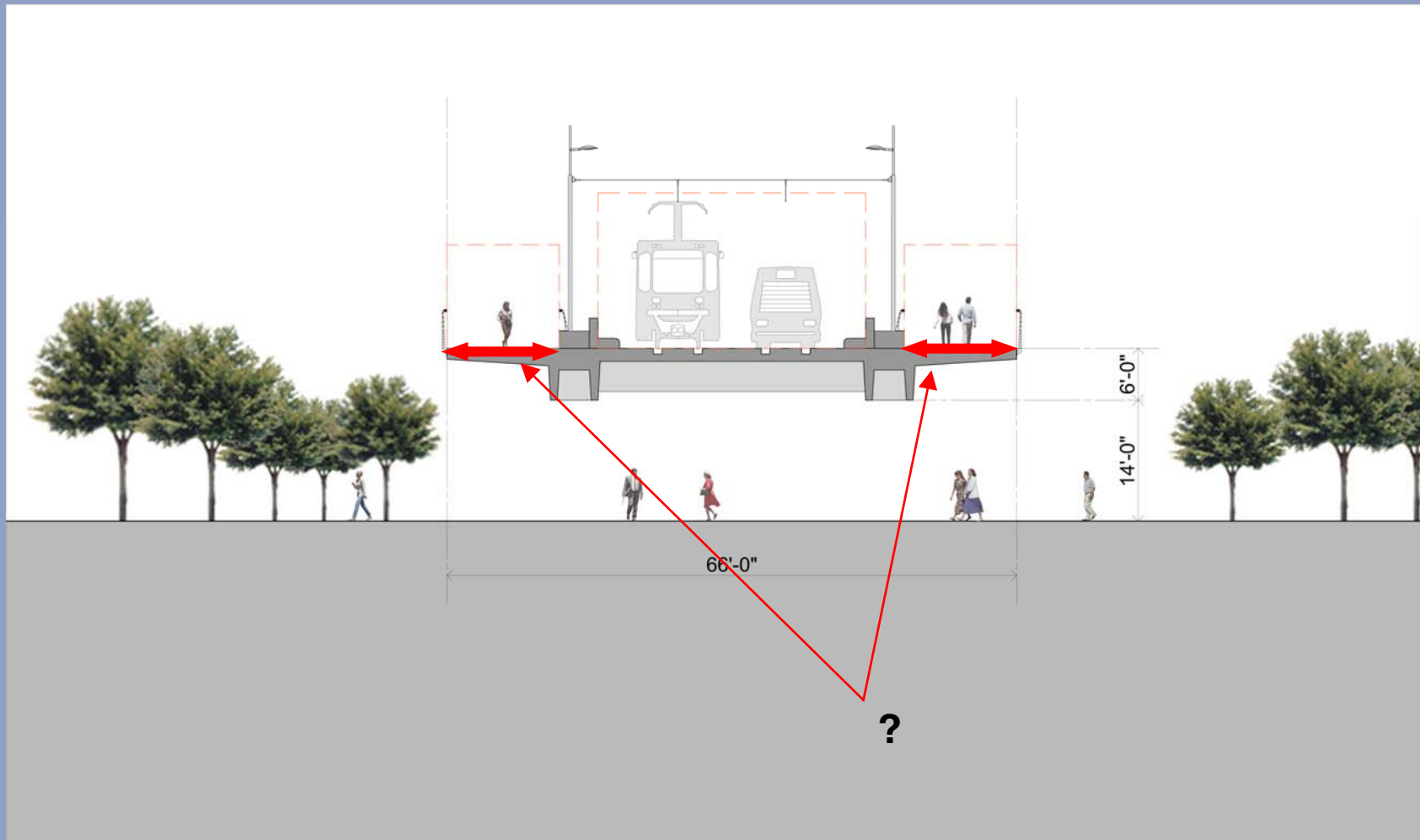
### **Vertical Clearance for Navigation**

#### **Issues to be balanced:**

1. Reasonability of impacts to river users—current and future
2. Cost
3. Usability of bridge for bikes, pedestrians, transit
4. Visual impact of bridge
5. Integration of project into landside

# West Segment- Willamette River Bridge

## Bicycle and Pedestrian Path Width



## West Segment- Willamette River Bridge

### **Bicycle and Pedestrian Path Width**

#### **Question:**

What is the width that the bridge should provide for each of the (2) paths? 12' has been assumed to date.

## West Segment- Willamette River Bridge

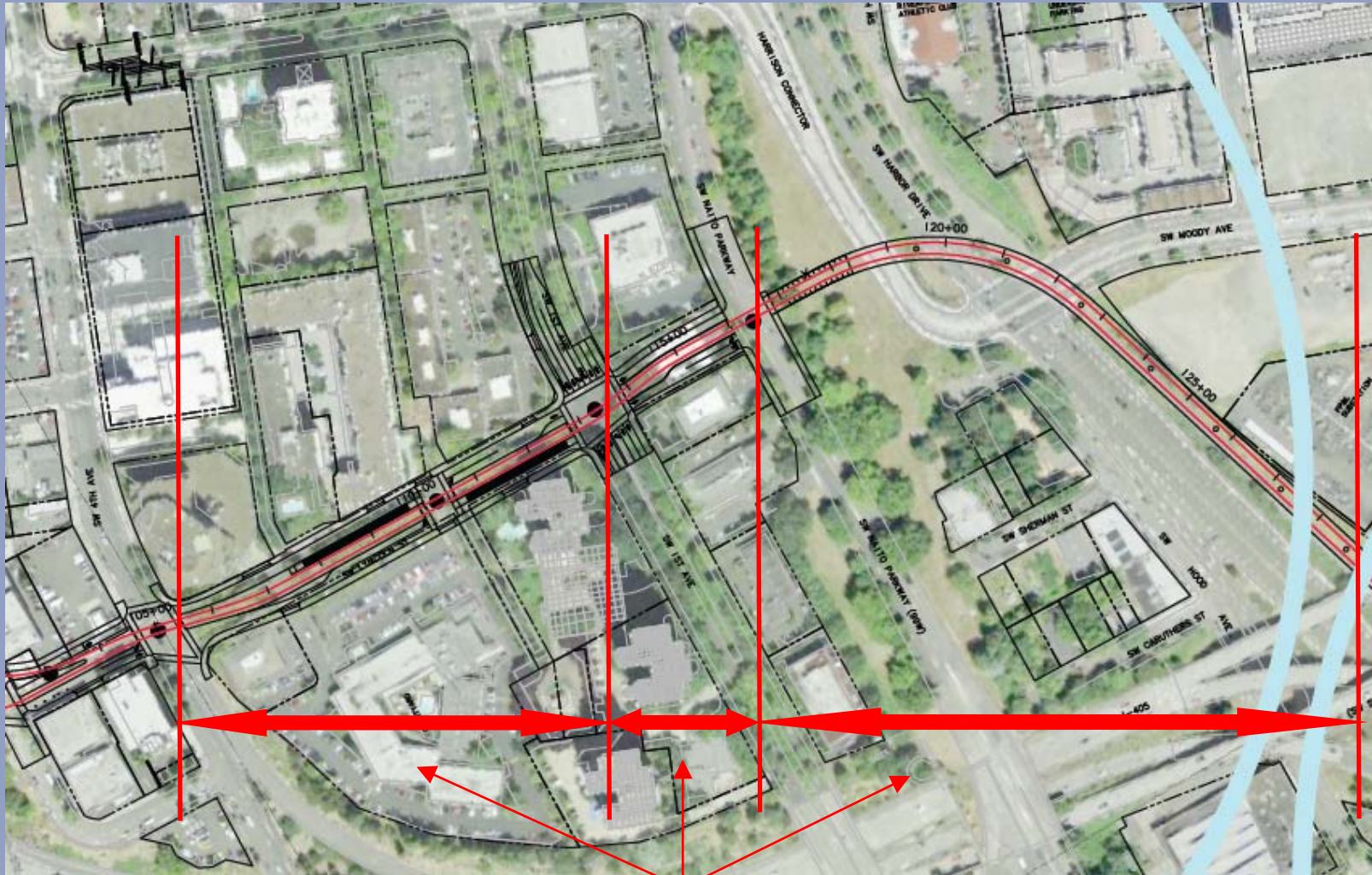
### **Bicycle and Pedestrian Path Width**

#### **Issues to be balanced:**

1. Usability of bridge for bikes and pedestrians– opening day and future
2. Cost
3. Integration of project into landside
4. Environmental impacts

# West Segment- Landside

## Lincoln/Harbor Station Location



?

## **West Segment- Landside**

---

### **Lincoln/Harbor Station**

#### **Question:**

What is the optimum single station location between Sheridan Street and 5<sup>th</sup> Avenue that the Project can provide?

## **West Segment- Landside**

---

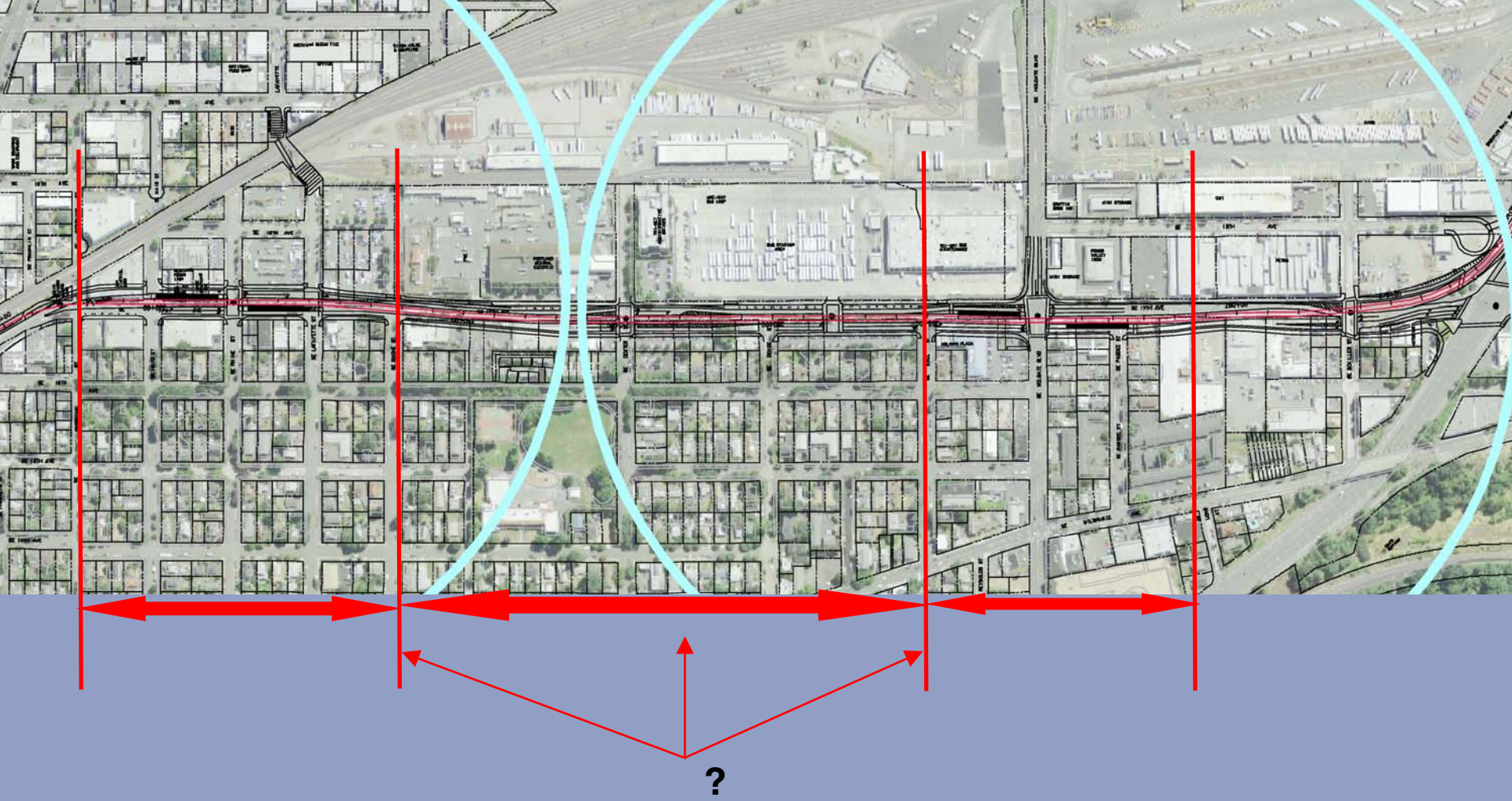
### **Lincoln Harbor Station**

#### **Issues to be balanced:**

1. Station Access
2. Cost
3. Urban Design Impacts of Station

# East Segment

## 17<sup>th</sup> Avenue Station Locations



## **East Segment**

---

### **17<sup>th</sup> Avenue Station Locations**

#### **Question:**

What is the optimum location for stations on 17<sup>th</sup> Avenue?

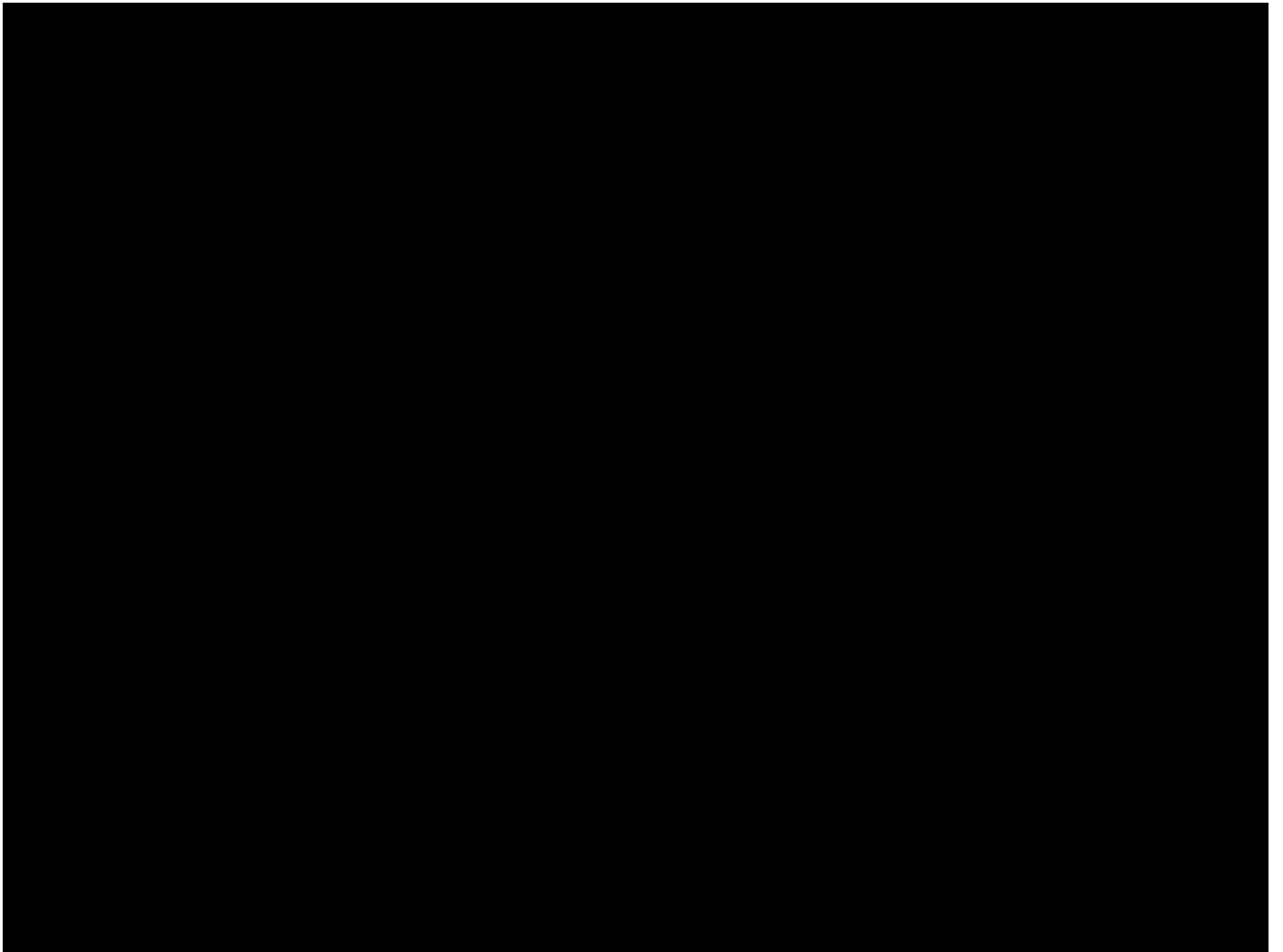
## **East Segment**

---

### **17<sup>th</sup> Avenue Station Locations**

#### **Issues to be balanced:**

1. Station Access
2. Cost
3. Right-of-Way/Property Impacts
4. Urban Design Impacts of Station



## Outreach Meetings

---

- Hosford-Abernethy Neighborhood Development (HAND)
- Milwaukie Elks Lodge
- Brooklyn Action Corps
- Central Eastside Industrial Council (CEIC) Land Use Committee
- Sellwood-Moreland Improvement League (SMILE)
- Central Eastside Urban Renewal Advisory Committee (URAC)
- Creston Kenilworth Neighborhood Association
- South Waterfront 20/20 Committees
- North Macadam Urban Renewal Advisory Committee (URAC)
- North Clackamas Chamber
- TriMet's Committee for Accessible Transportation (CAT)
- Portland Mall Management, Inc (PMMI)

---

**Thank You**