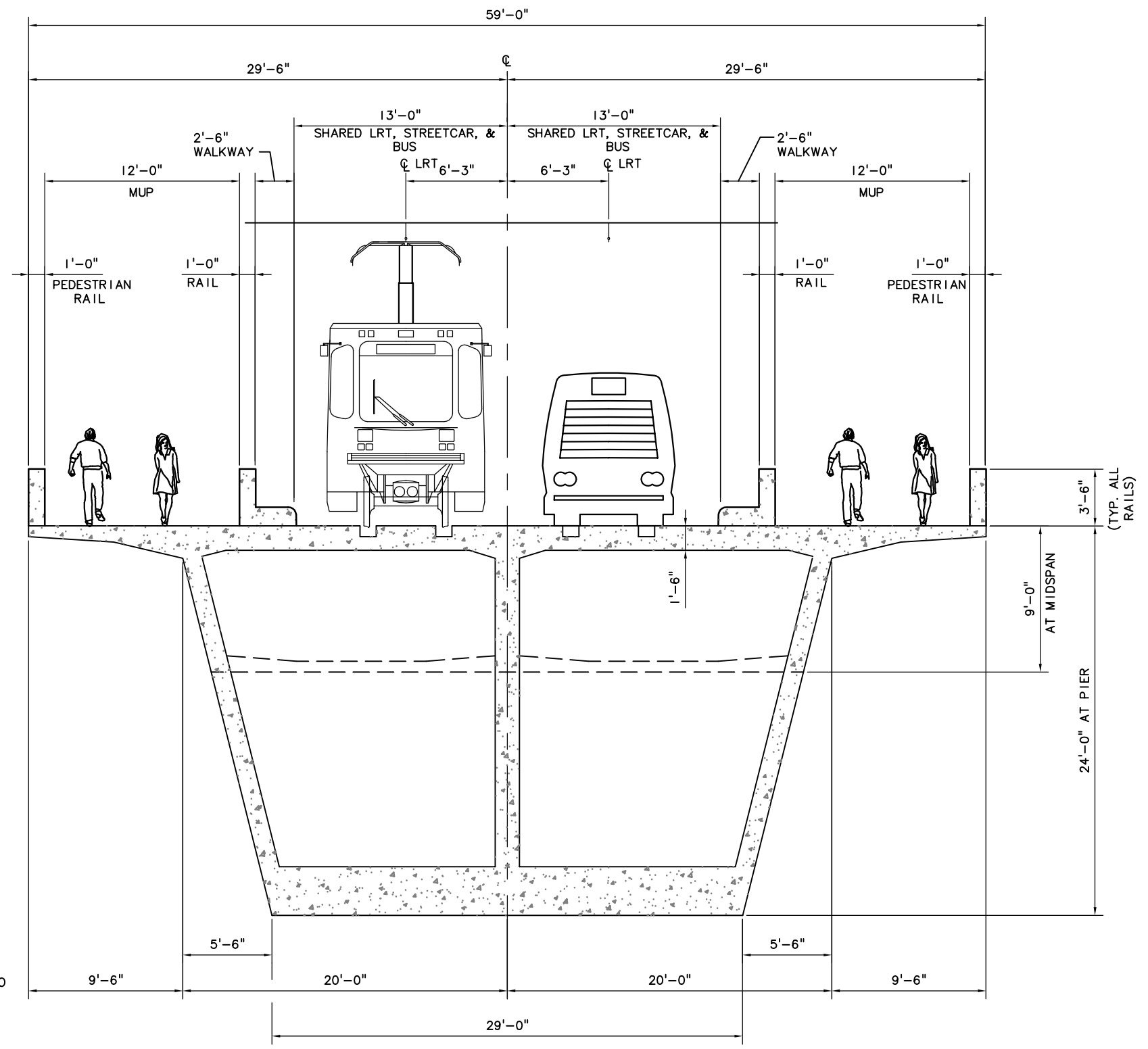


S:\Reference\15-XREF\SHEETS\S15-120.dwg, 3/19/2008 1:52:11 PM, lortsb

1
2
3
4
5



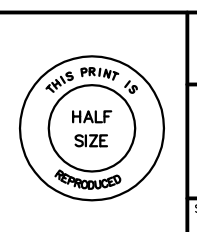
NOTES:
1. BRIDGE SHEETS ILLUSTRATE BRIDGE FOR ONE ALIGNMENT OPTION. BRIDGES FOR OTHER OPTIONS WOULD BE SIMILAR TO THAT ILLUSTRATED BUT IN LOCATIONS PER CIVIL PLANS, AND CLEARANCE CONDITIONS. BOTH TYPICAL SECTIONS COULD APPLY TO ANY ALIGNMENT OPTION EXCEPT LPA WITH BUS. 72' CLEARANCE CONDITION FOR LPA WITH BUS WOULD ASSUME A CABLE STAYED THROUGH TRUSS (SINGLE PIER) DESIGN AS ESTABLISHED IN PREVIOUS STUDIES.

TYPICAL SECTION
1/8" = 1'-0"

MUP = MULTI-USE PATH

NO.	DATE	BY	APPD.	REVISIONS

L HWEE DESIGNED	DATE
G MALIN DRAWN	DATE
CHECKED	DATE
APPROVED	DATE



TRI-COUNTY METROPOLITAN TRANSPORTATION DISTRICT OF OREGON

CH2MHILL **TRI MET**

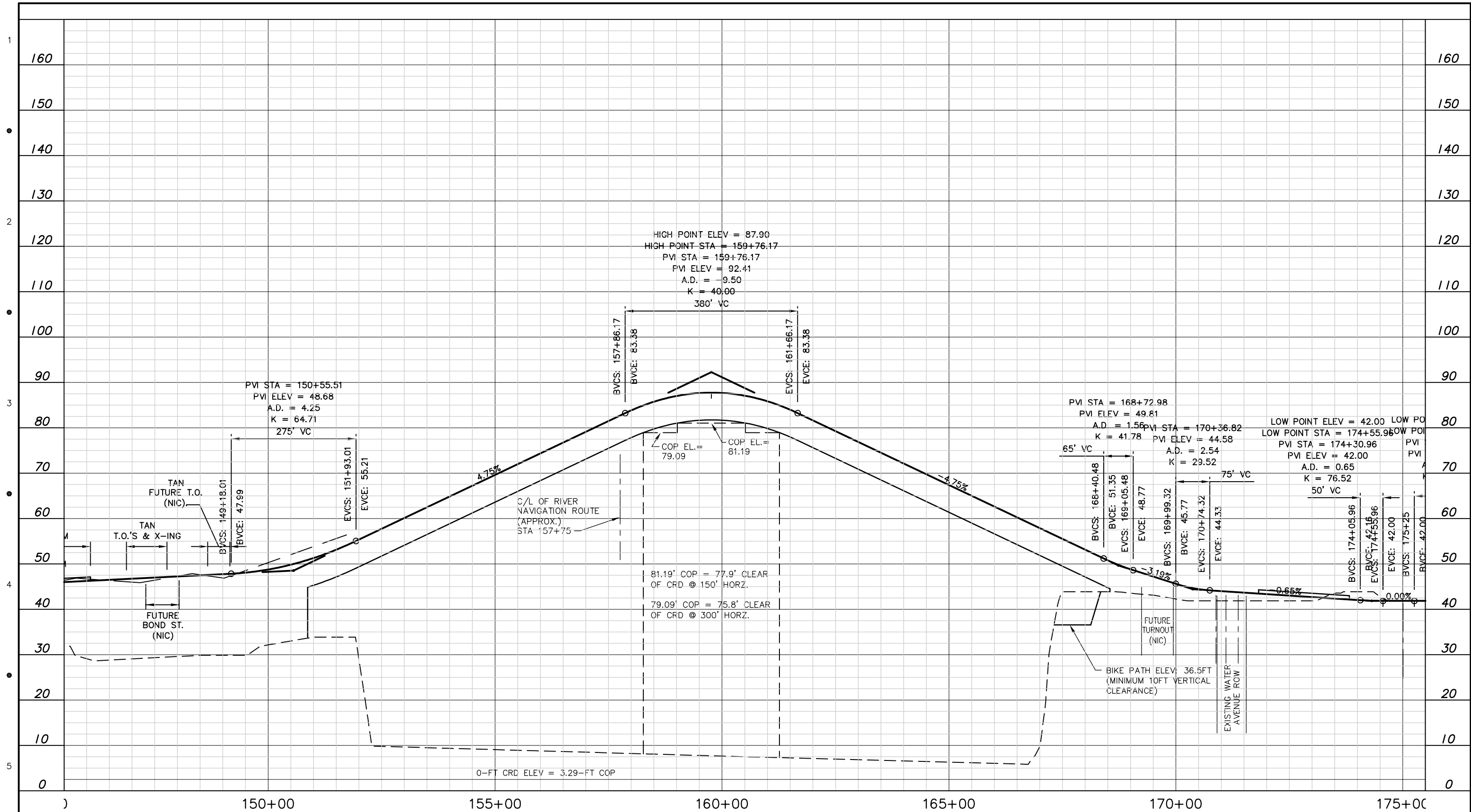
CAPITAL PROJECTS AND FACILITIES DIVISION
710 N.E. HOLLADAY STREET
PORTLAND, OREGON 97232

SUBMITTED: DATE: APPROVED: DATE:

SOUTH CORRIDOR PHASE 2
SDEIS BRIDGE CONCEPTUAL DESIGN

TYPICAL SECTION - CONCRETE SEGMENTAL OPTION
65' CLEARANCE

SCALE: 1/8" = 1'-0" DRAWING NO.: S15-120 CONTRACT NO.: SHEET NO.:



NO.	DATE	BY	APPD.	REVISIONS

DESIGNED	DATE
JHM	05/08
DRAWN	DATE
CHECKED	DATE
APPROVED	DATE

TRI-COUNTY METROPOLITAN TRANSPORTATION DISTRICT OF OREGON

TRIMET

CAPITAL PROJECTS
 AND
 FACILITIES DIVISION
 710 N.E. HOLLADAY STREET
 PORTLAND, OREGON 97232

PORTLAND TO MILWAUKIE LRT
LOCALLY PREFERRED ALTERNATIVE (LPA)

PROFILE

SUBMITTED:	DATE:	APPROVED:	DATE:	SCALE:	DRAWING NO.:	CONTRACT NO.:	SHEET NO.:
				1" = 100'-0"	C15-106		

