



PORTLAND-MILWAUKIE
LIGHT RAIL PROJECT

How to be involved?

Visit the project website: trimet.org/pm.

View project documents and maps. Sign up for email updates about meetings, open houses and more.

Complete a comment card. Specify your area of interest. Share your contact information to receive information about project milestones, events and opportunities for involvement.

Attend open houses. Held several times a year; next scheduled for summer/fall 2009.

Call your TriMet Community Representative.

Each representative will serve as a liaison throughout design and construction:

- West of Willamette River and Central Eastside: DeeAnn Sandberg, 503-962-2273
- Southeast Portland: Jennifer Koozer, 503-962-2116
- Milwaukie and Oak Grove: Claudia Steinberg, 503-962-2154
- General inquiries: 503-962-2150

Call your jurisdictional representative.

- City of Portland: Art Pearce, 503-823-7791
- City of Milwaukie: Grady Wheeler, 503-786-7503
- Clackamas County: Ellen Rogalin, 503-742-4274

Participate in Citizens Advisory Committee (CAC) meetings.

The Project's CAC meets every third Thursday, 6-7:30 p.m. (Meeting location pending). Each meeting includes time for public comments.

The CAC is comprised of 24 members representing residents, businesses, institutions and other stakeholder groups including bicyclists and people with disabilities.

List of CAC Members

Chair: Rick Williams, Lloyd District Transportation Association

Ardenwald-Johnson Creek Neighborhood: Michole Jensen

Bicycle Transportation Alliance (BTA): Heather Andrews

Brooklyn Action Corps: Lance Lindahl

Central Eastside Industrial Council (CEIC): Dee Walsh

Dark Horse Comics (downtown Milwaukie business): Neil Hankerson

Eastmoreland Neighborhood: Dan Packard

Hector Campbell Neighborhood: David Aschenbrenner

Historic Milwaukie Neighborhood: Ray Bryan

Hosford-Abernethy Neighborhood (HAND): Susan Pearce

Island Station Neighborhood: Lynn Welsh

Milwaukie Lumber: Frank Hemer

Oak Grove: Barbara Dimick, David Edwards, Valerie Chapman

Oak Lodge Community Council: Henry Schmidt

Oregon Museum of Science & Industry (OMSI): Rod McDowell

Portland Opera: Valeria Ramirez

Portland State University (PSU): Dan Zalkow

Sellwood-Moreland Neighborhood (SMILE): Mike Gephardt

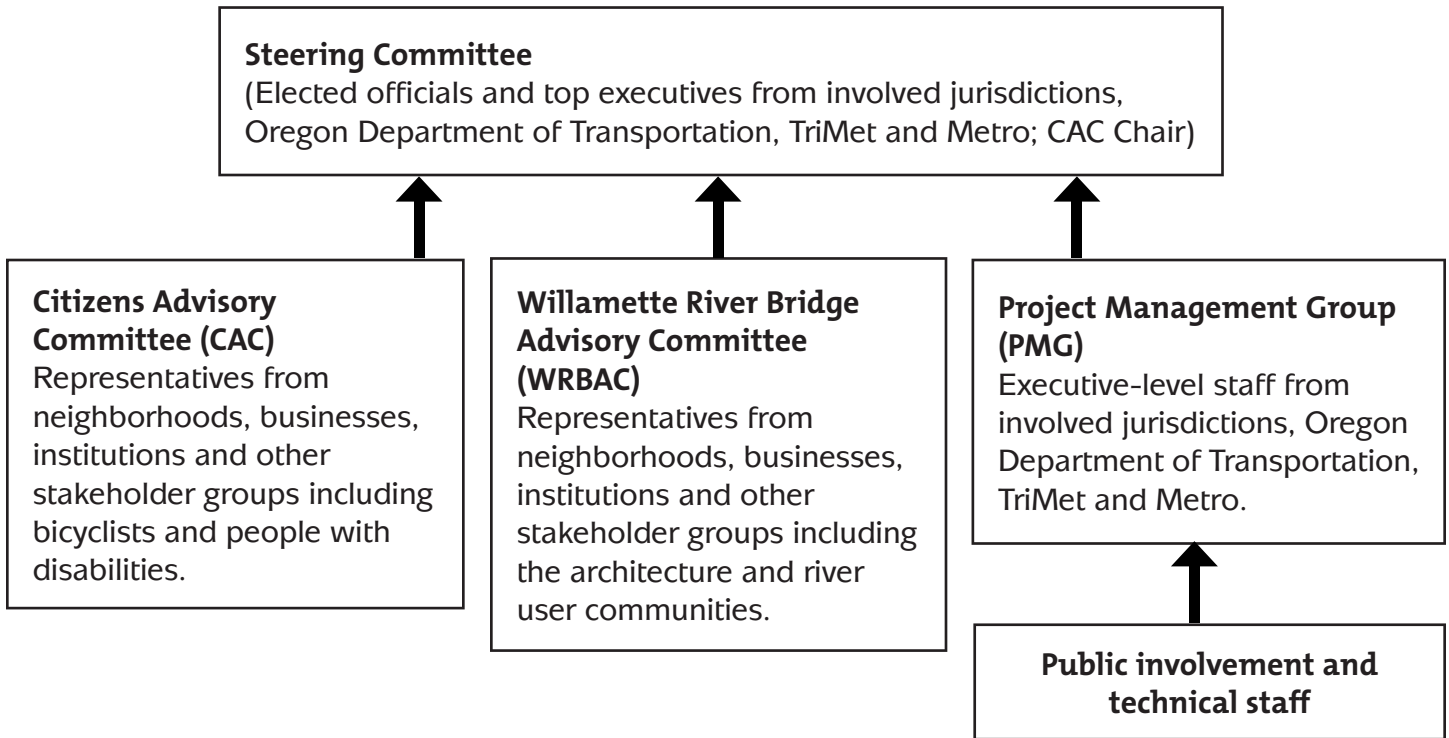
South Portland Neighborhood: Ken Love

South Waterfront Neighborhood: Debbie Cronk

TriMet Committee on Accessible Transportation (CAT): Lina Bensel

WW Metal Fab (Milwaukie North Industrial Area business): Joe Traverso

Project Structure



For alternative formats contact us:
503-238-RIDE (7433)
customerservice@trimet.org
TTY 503-238-5811

Portland-Milwaukie Light Rail Project is a partnership among:

